

# Cscape 10 & Canvas

## Customer Presentation

# Agenda

- What are Cscape 10 and Canvas?
- Where does Canvas fit?
- Canvas Model Lineup
- Canvas Support Materials
- Cscape 10 Feature Summary
- Cscape 10 Features Exclusive to Canvas



# What is Cscape 10?

- Cscape 10 is a major new release of our configuration software for ALL Horner All-in-one Controllers
- Cscape 10 remains a FREE download from our website
- Cscape 10 contains features usable in any modern OCS, as well as features exclusive to the new Canvas OCS



# What is Canvas?

- Canvas is the latest family of Horner OCS All-in-one Controllers
- Canvas offers three primary differentiators from other Horner OCS product lines:
  - An Advanced Graphics Engine
  - A Dual-Core Microprocessor with dedicated Graphics & Logic cores
  - IIOT Functionality as Standard



# Where Does Canvas Fit?



**Micro OCS**  
Simple Machines



**XL Prime OCS**  
Standard Machine Control



**Canvas OCS**  
Advanced Graphics & IIOT

# Canvas Model Lineup

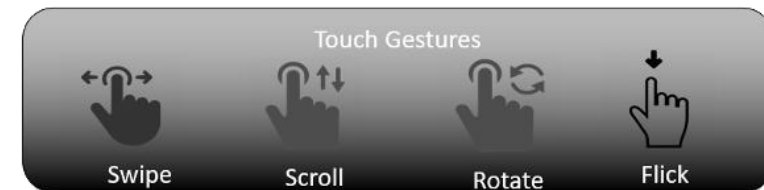
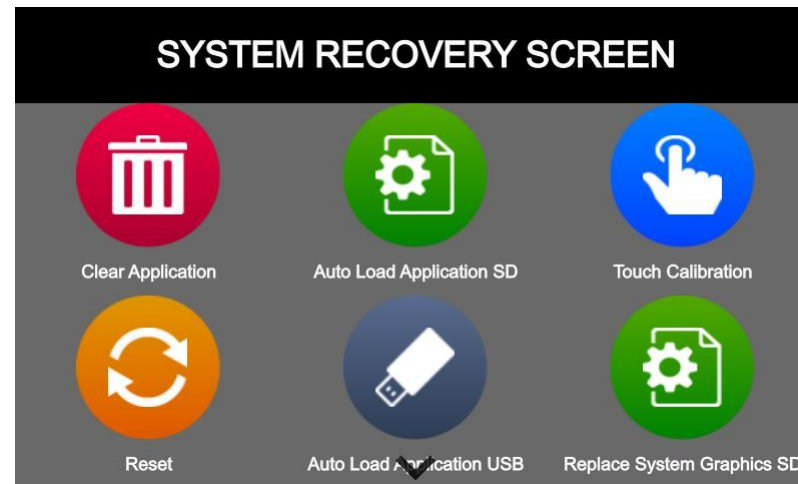
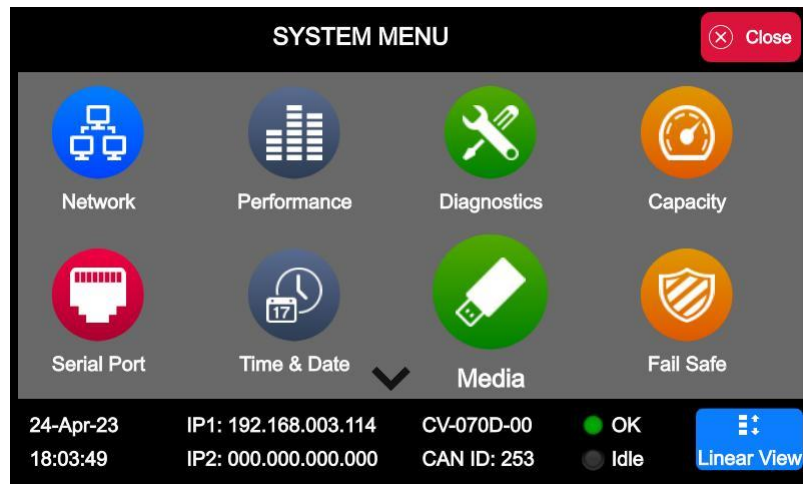
- Five (5) Screen Configurations
- Advanced Graphics
- Dual-core Microprocessor
  - Logic Core & Graphics Core
- IIOT Features Standard
  - MQTT & WebMI+
- OCS Peripherals
  - CAN, LAN, Serial, microSD, USB-A & USB-programming
- Enhanced IEC pre-licensed
  - Simulation & Breakpoints





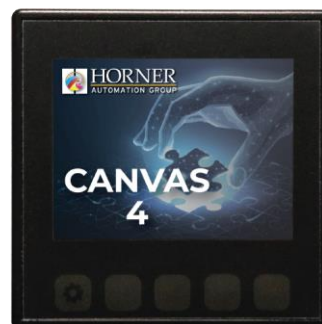
# Canvas Model Lineup

- All Canvas Models Feature Redesigned System Graphics & Simple Gesture Support



# Canvas Model Lineup

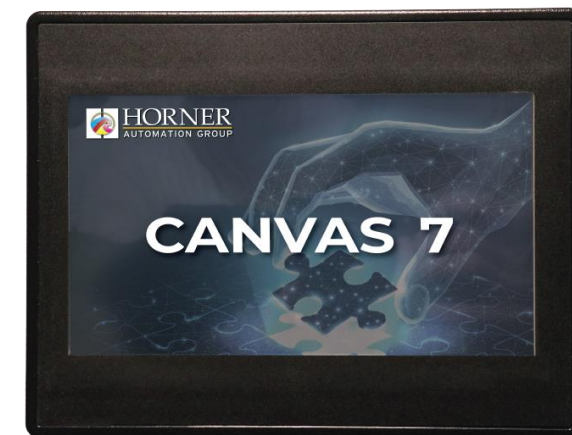
- Canvas 4
  - XL Series I/O options  
Models 0, 2, 3, 4, 5, 6
- Canvas 5
  - X5 I/O complement
  - 4 DI + 4 DO + 4 AI
- Canvas 7
  - XL Series I/O options  
Models 0, 2, 3, 4, 5, 6



**Canvas 4**  
320 x 240  
Color  
Touch  
w/Buttons



**Canvas 5**  
480 x 277  
Color  
Touch



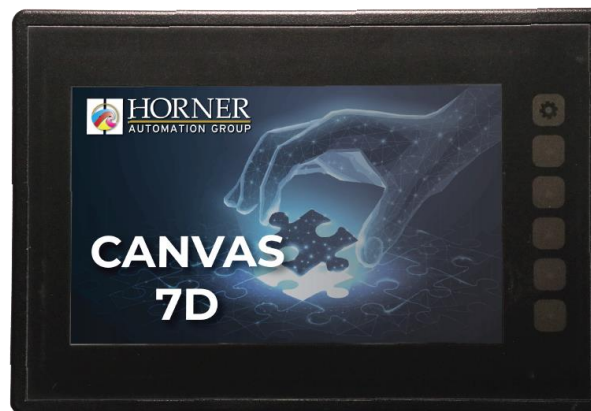
**Canvas 7**  
800 x 480  
Color  
Touch

**Contact your local distributor for pricing.**

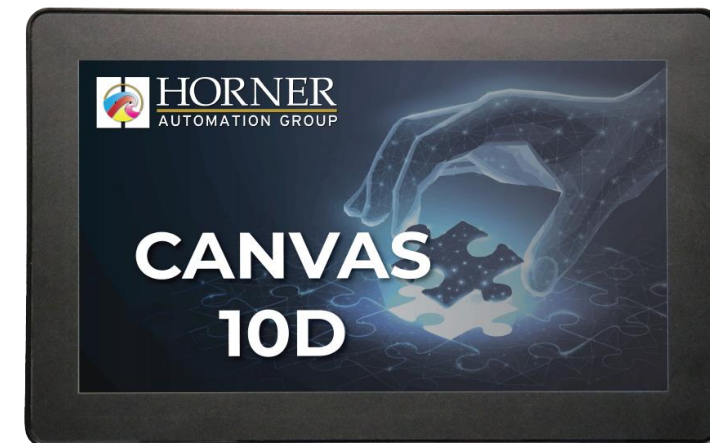


# Canvas Model Lineup

- Canvas 7D
  - XL Series I/O options  
Models 0, 2, 3, 4, 5, 6
  - Dual Ethernet &  
Dual CAN
- Canvas 10D
  - XL Series I/O options  
Models 0, 2, 3, 4, 5, 6
  - Dual Ethernet &  
Dual CAN



**Canvas 7D**  
800 x 480  
Color  
Touch  
w/Buttons



**Canvas 10D**  
1024 x 800  
Color  
Touch

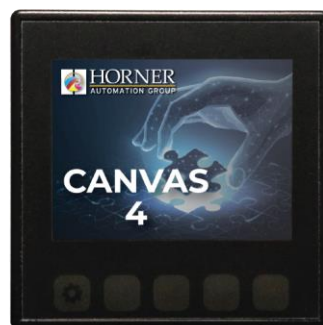
**Contact your local distributor for pricing.**

# Overlay Options

Example: Canvas 4 Model 2 Part Number: HE-CV-035C-02

We offer a range of overlay options for the entire Canvas series to ensure it fits right into your existing application.

By adding a suffix at the end of the part number, you can choose the specific overlay option you require.



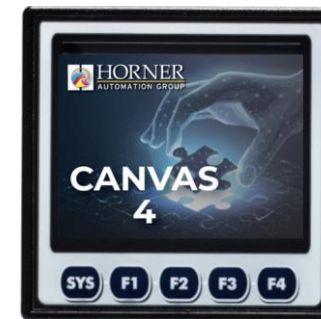
HE-CV-035C-02

Omission of additional Suffix Specifies a Black overlay & keypad.



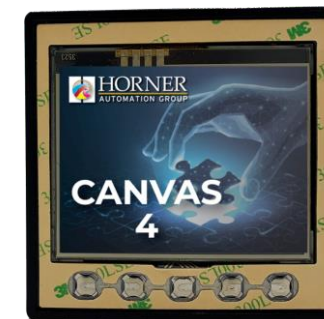
HE-CV-035C-02-00

Suffix -00 specifies a Blue/Black overlay & keypad.



HE-CV-035C-02-01

Suffix -01 specifies an Instrument Grey overlay & keypad.



HE-CV-035C-02-02

Suffix -02 specifies No overlay & keypad fitted. (Customer fits their Own)

These options are available for order on all Canvas units using the above suffixes.

**Custom overlays are also possible, please contact your local distributor to discuss your requirements.**

- [illegible]

# Canvas Availability – July 1st

- All Models are “Build-to-Order”  
lead times from factory: a 2–3 week (4, 7, 7D) and 4-6 week (5, 10D)
- Please contact your local Horner Distributor for up-to date availability and lead times for your locale.





# Cscape 10 Feature Summary

- User Interface Updates
  - Quick Menu Button
  - Ribbon Toolbar
  - Quick Access Toolbar
- Graphics Editing Changes
  - Editing Screen Graphics in Tabs
  - Graphics Toolbar
  - Graphics Toolbox
- Redesigned Graphics Objects Exclusively for Canvas





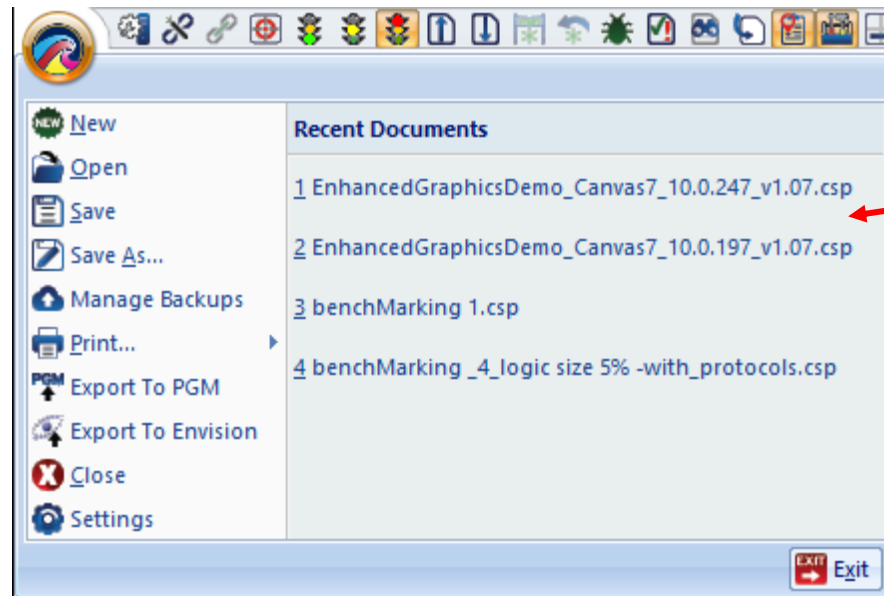
# Cscape 10 – Quick Menu Button



**Program Management  
(New, Open, Save, etc.)**

**Access to Frequently  
Used Functions  
(Export, Print, etc.)**

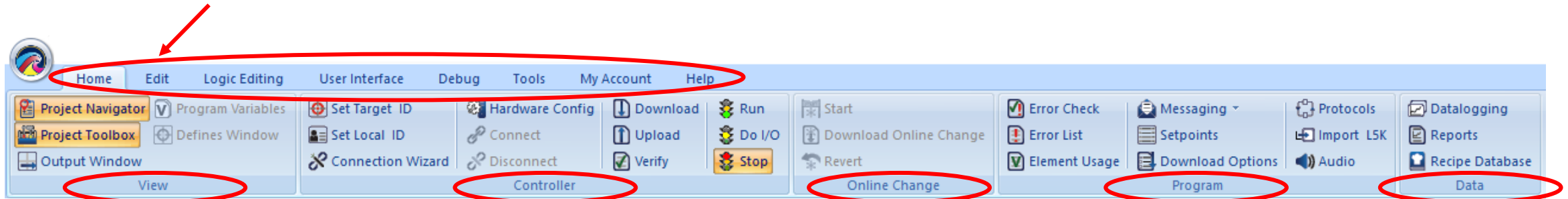
**All Program Settings  
in a single item**



**Recent Programs**

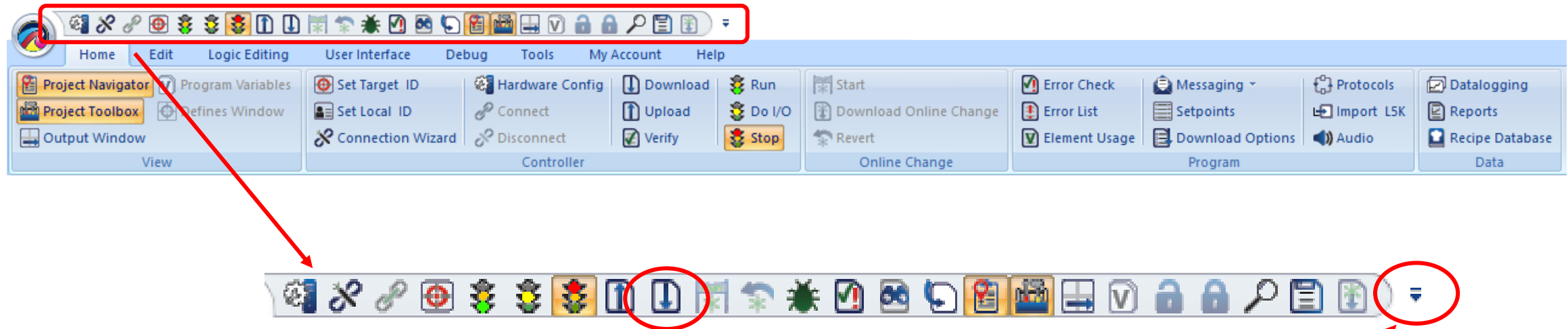
# Cscape 10 - Ribbon Toolbar

## Commands Categorised into 8 Different Tabs



## Each Tab Divided into Command Groups

# Cscape 10 – Quick Access Toolbar



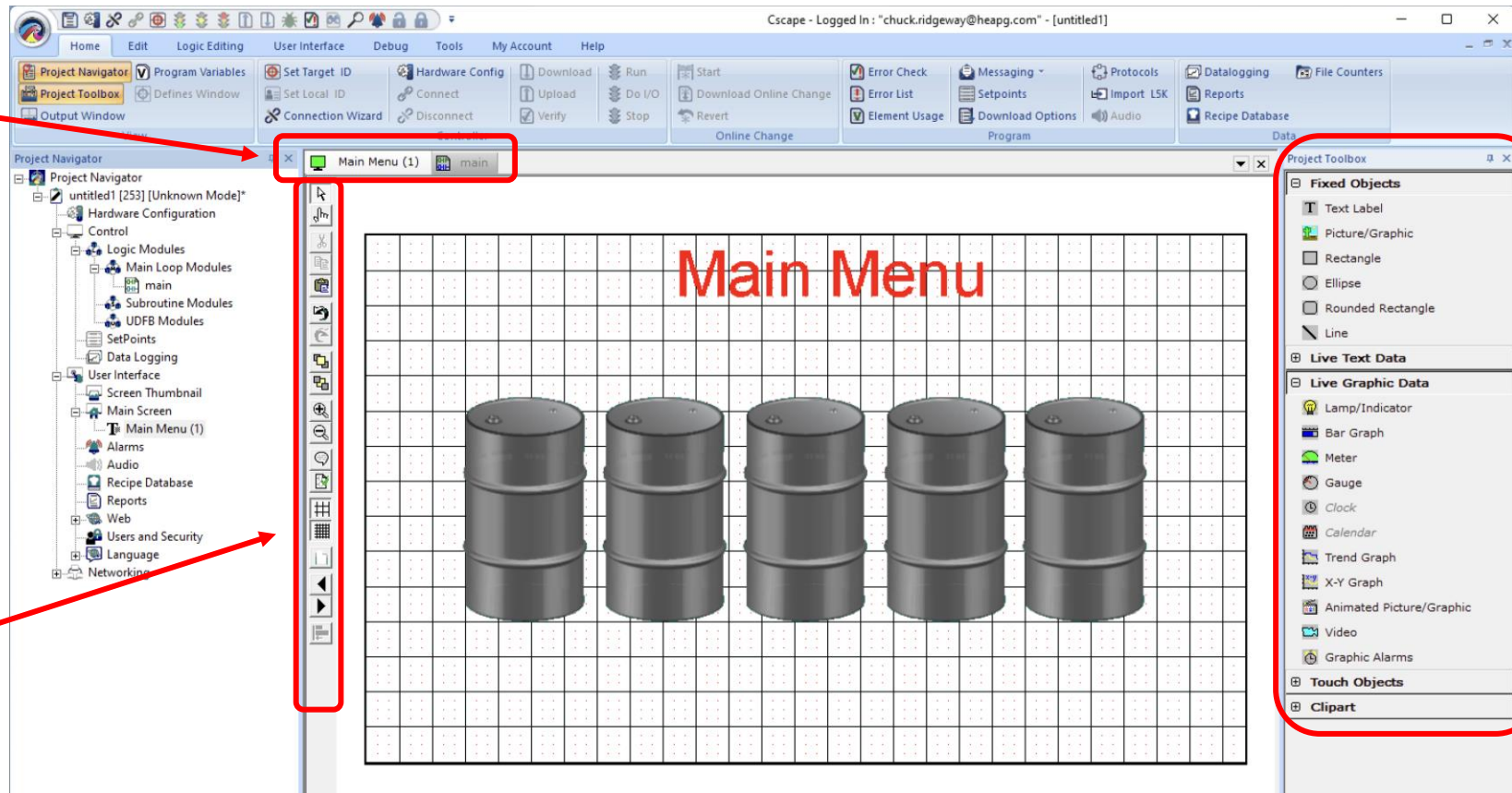
**Each Command represented by an updated Icon**

**Completely customisable with over 100 commands available**

# Cscape 10 – Graphics Editing

**Screens Edited in Tabs alongside Logic Tabs**

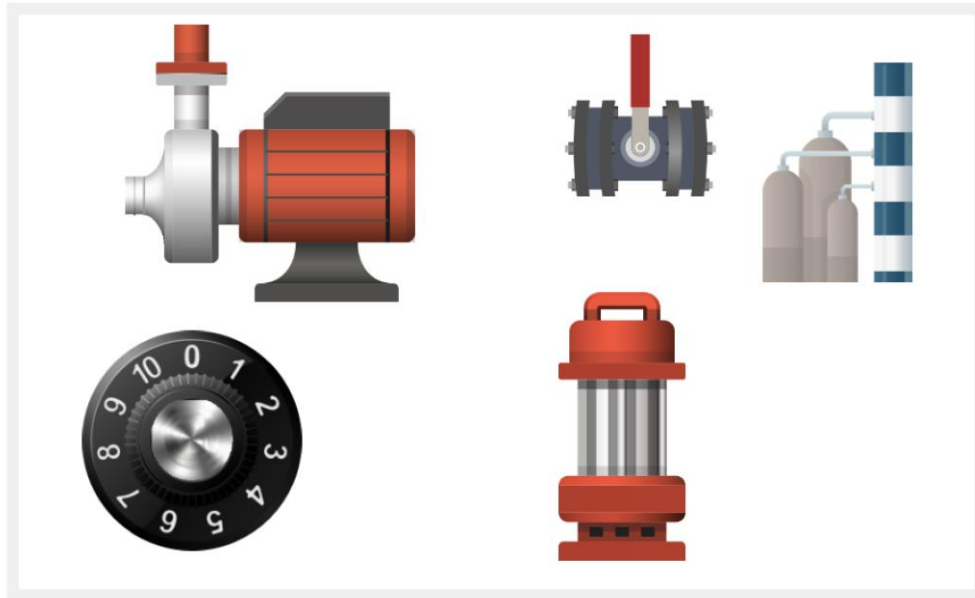
**Graphic Toolbar for Common Graphics Editing Functions**



**Graphics Objects organised in Toolbox**

**Toolbar & Toolbox switch context for Logic vs Graphic Tabs**

# New Clipart Images



**Hundreds of Images in 30+ categories**

**Available in all versions of Cscape**

**Compatible with all OCS Models**

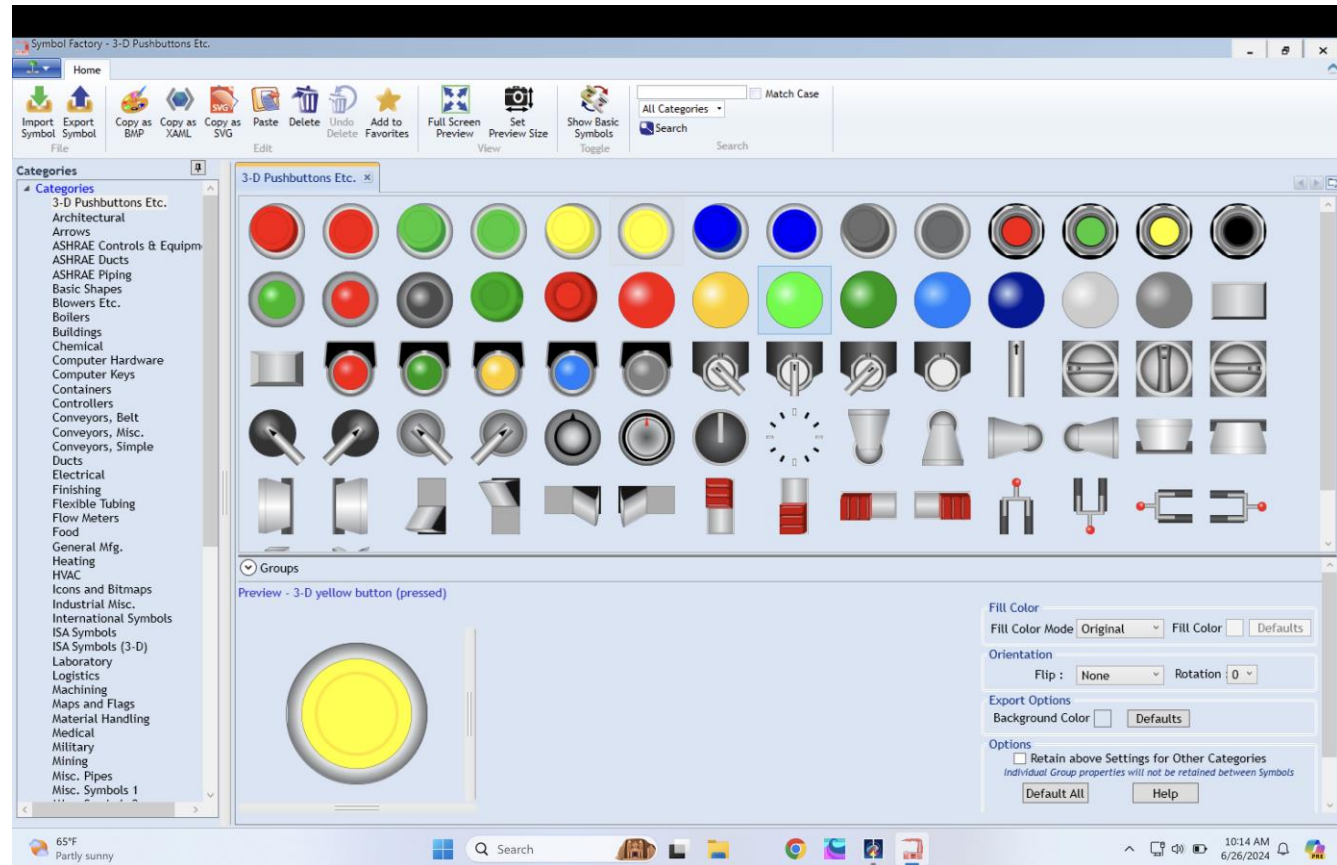
Clipart
⊕ Agriculture
⊕ Backgrounds
⊕ Barrels & Tanks
⊕ Brewing
⊕ Business Communication
⊕ Compasses & Clocks
⊕ Computer Chips
⊕ Construction
⊕ Conveyors Mfg
⊕ Dials & Knobs
⊕ Ductwork
⊕ Fans & Blowers
⊕ Gas Cylinders & Tanks
⊕ Gestures
⊕ Heating Cooling

⊕ Logos
⊕ Media
⊕ Medical
⊕ Meters & Gauges
⊕ Miscellaneous
⊕ Motors & Pumps
⊕ Oil & Gas
⊕ People
⊕ Pipes & Valves
⊕ Robots
⊕ Signs
⊕ Silos & Tanks
⊕ Sliders & Switches & B...
⊕ Smokestacks
⊕ Switches
⊕ Writing

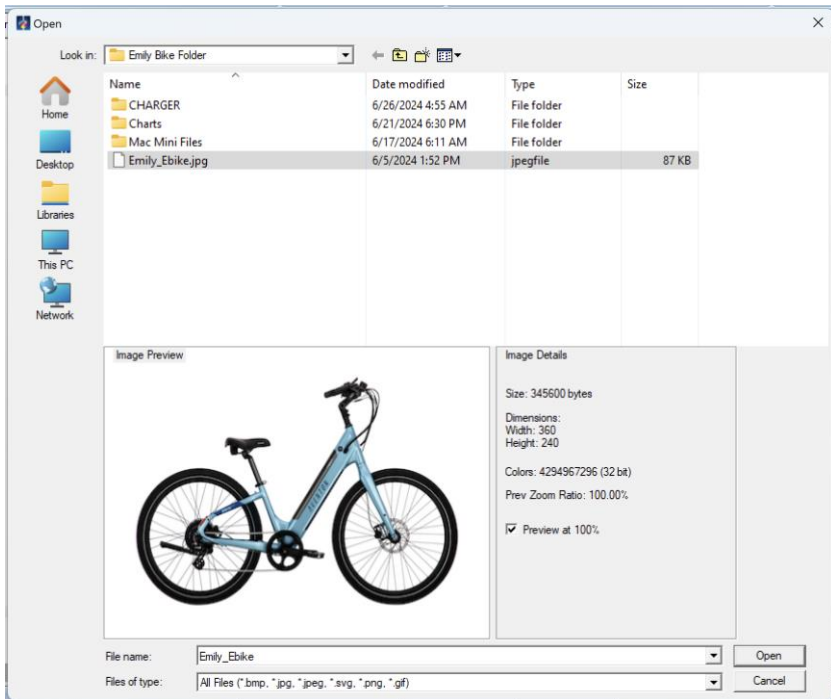


# Continued Support for Symbol Library

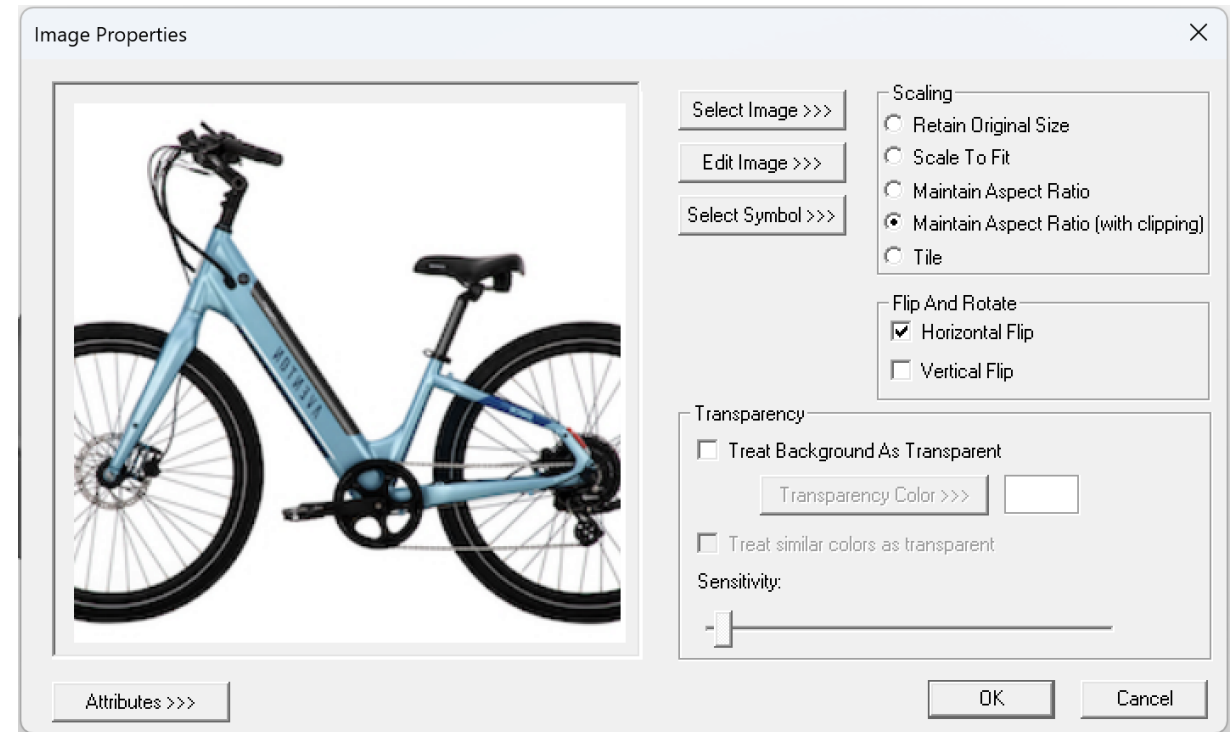
- Cscape 10 with Symbols
  - Symbol Factory and Clipart
- Cscape 10 FREE Download
  - Clipart only



# Cscape 10 – New Image Import Window



**Canvas adds png/gif support & additional Scaling options**



**Manipulate images  
(Scale, Flip, Eliminate Background)**

# Cscape 10 - Canvas Exclusive Graphics

- Enhancements for All Objects
  - Enhanced Attributes
  - Custom Backgrounds
- Updated Objects
  - Indicator Objects
  - Data Objects
  - Switch & Button Object
  - Jump Object
  - Slider Object
  - Gauge & Meter Objects
- Redesigned from the Ground Up
  - Trend Object
  - XY Graph Object
  - Alarm Object
  - Recipe Object
  - Video Object

## Enhanced Attributes (All Objects)

Enhanced Display Attributes

Enhanced Display Attribute Structure Variable:

Or

Attribute	Value	Address	16-BIT
Opacity	100	Barrel[0].EnhanceOpacity	16-BIT
Rotation	0	Barrel[0].EnhanceRotation	16-BIT
X	60	Barrel[0].EnhanceXAxis	16-BIT
Y	144	Barrel[0].EnhanceYAxis	16-BIT
Width	170	Barrel[0].EnhanceWidth	16-BIT
Height	216	Barrel[0].EnhanceHeight	16-BIT

If registers/variables are configured then the corresponding display attribute value will be read from that register/variable. Attribute values seen here shall not be automatically updated to corresponding registers/variables.

OK Cancel

**Rotation**



**Opacity**



**Height**



**Width**

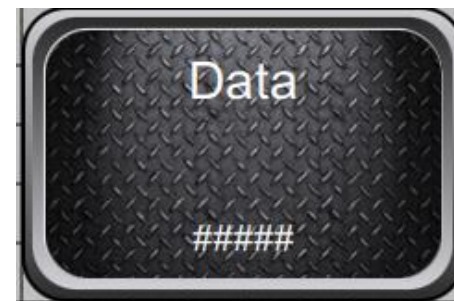
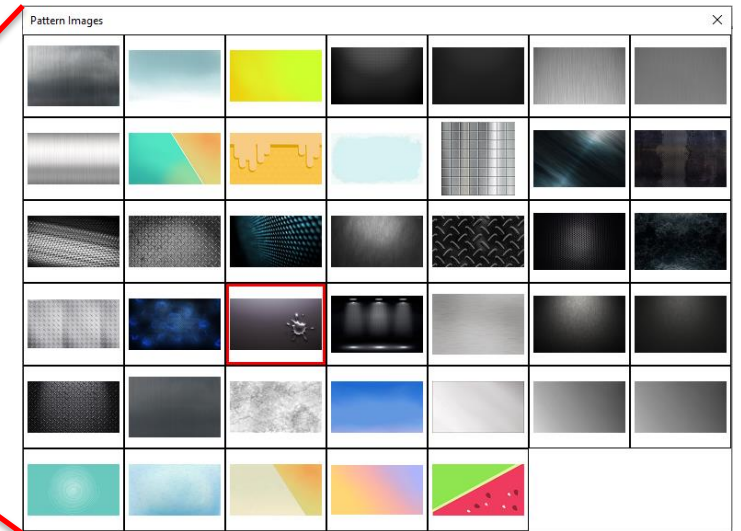
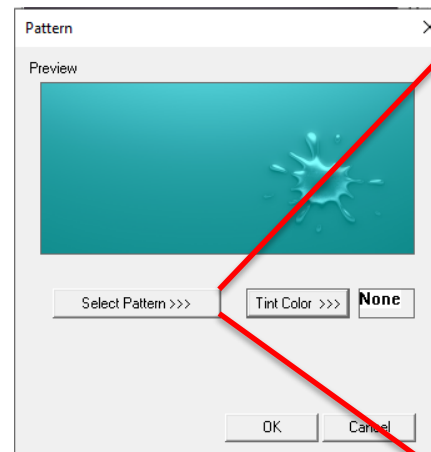
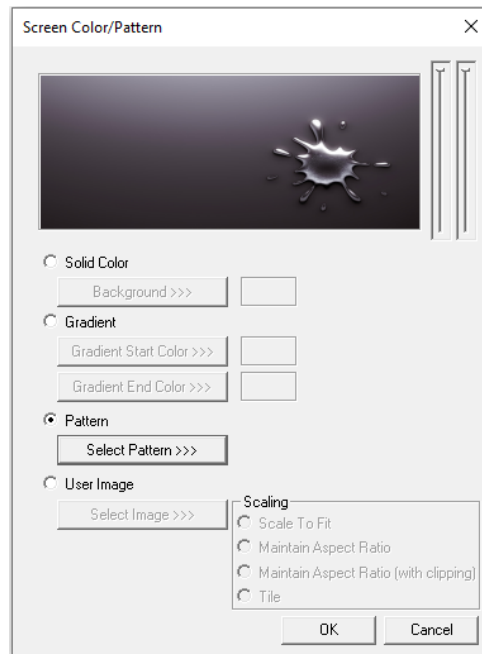
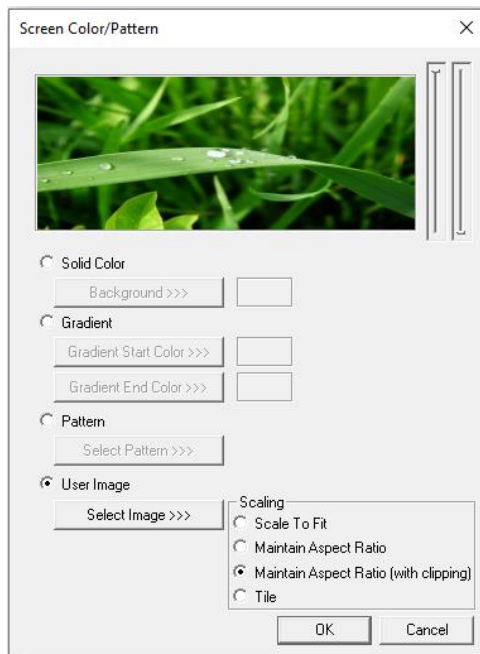


**Also X-position & Y-position**

**Assign to Multiple Variables or a single Structured Variable**

**Attribute Changes at Runtime with the Variable Value**

## Customized Backgrounds (All Objects)

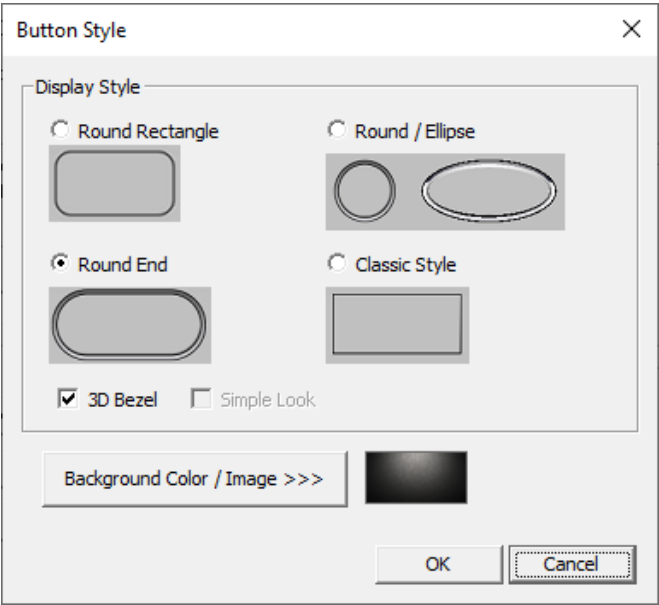
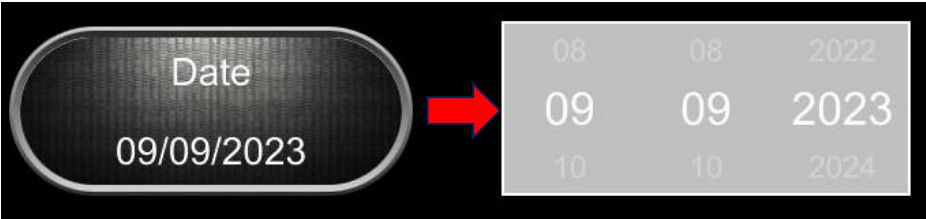




# Data Object Enhancements

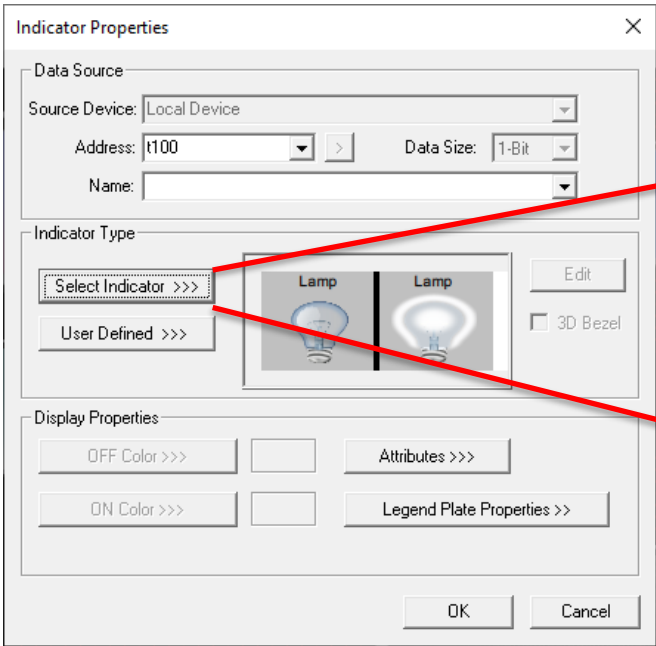


## Optional Tumbler Editing

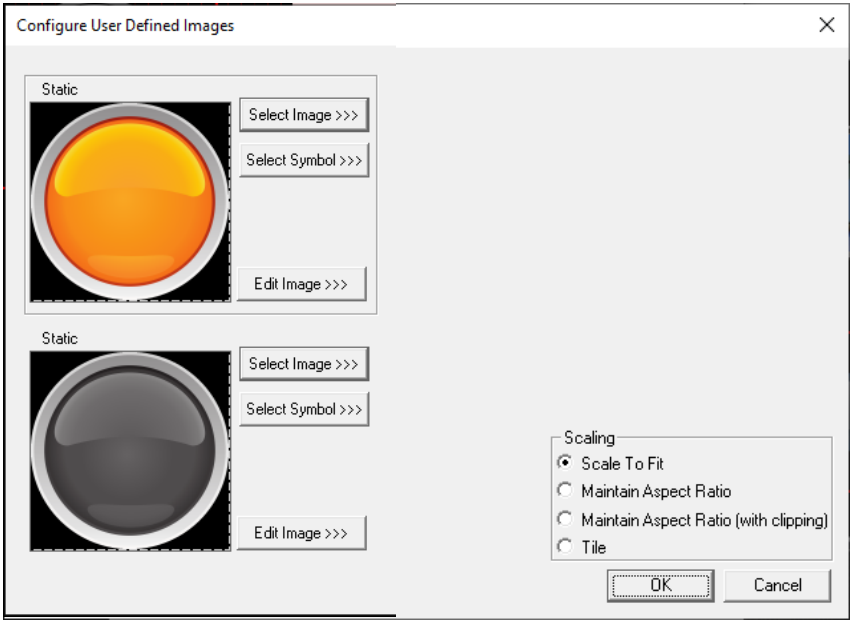
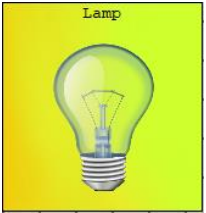
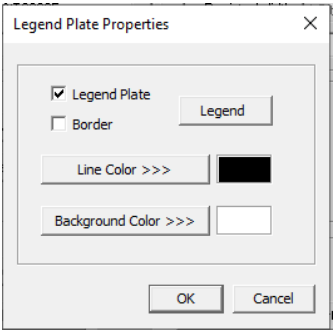
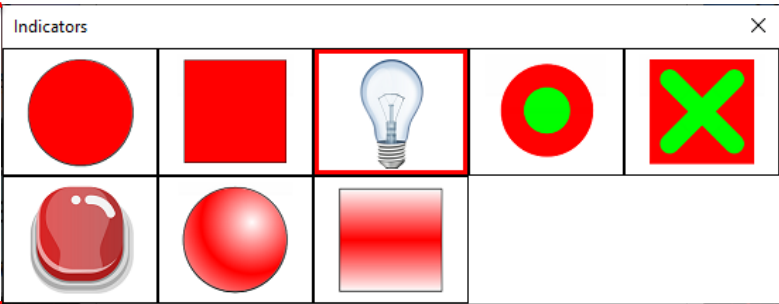


## New Shape Options

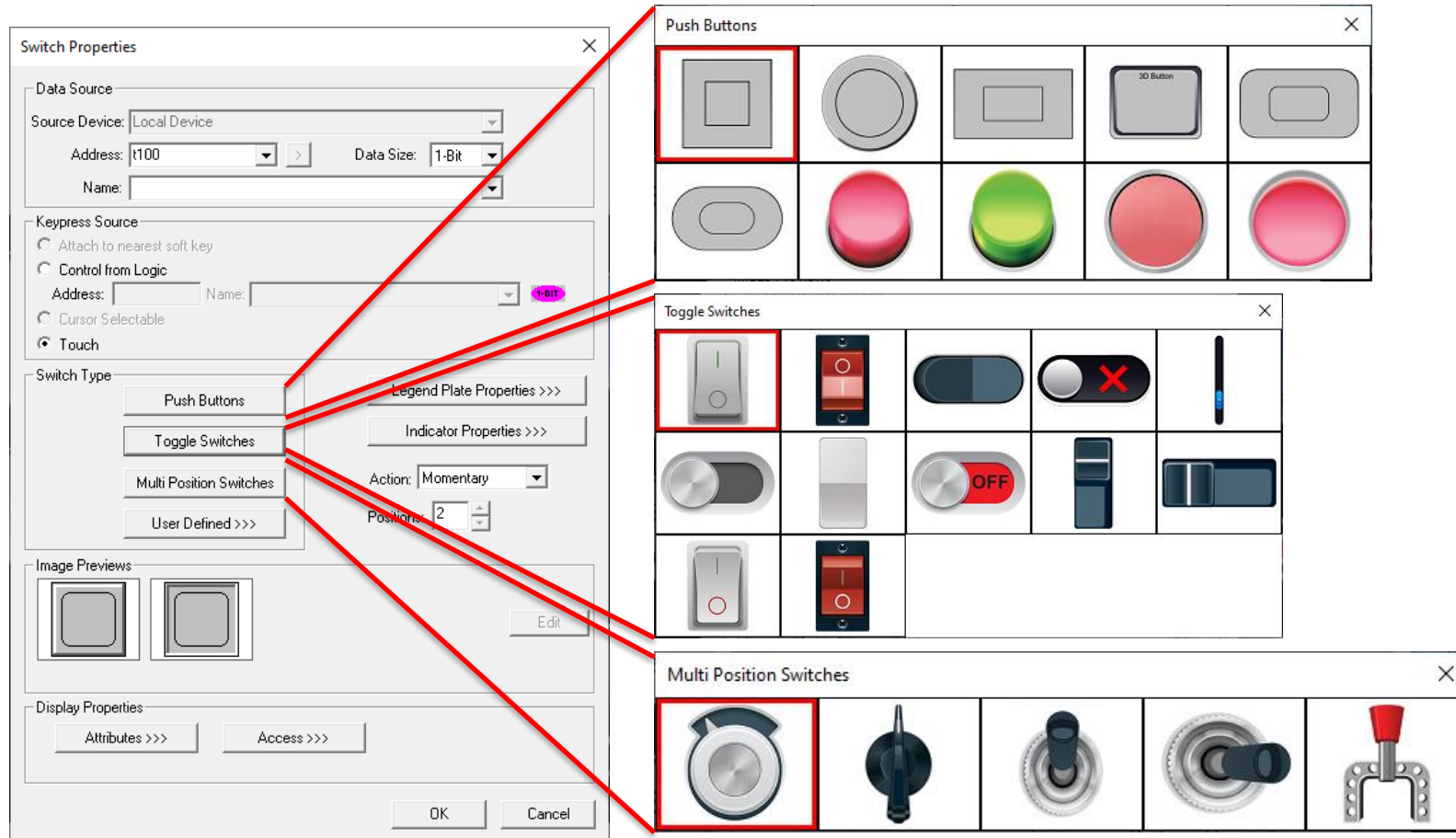
# Indicator Enhancements



## New Indicator Styles



## Button & Switch Enhancements

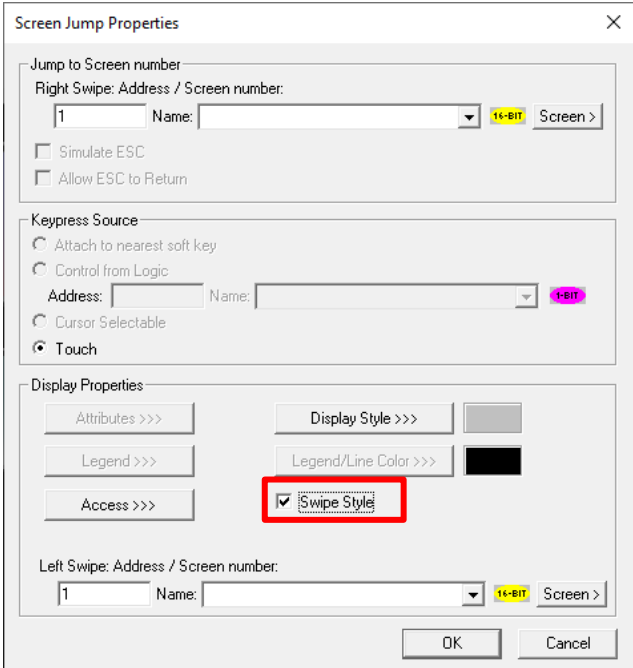
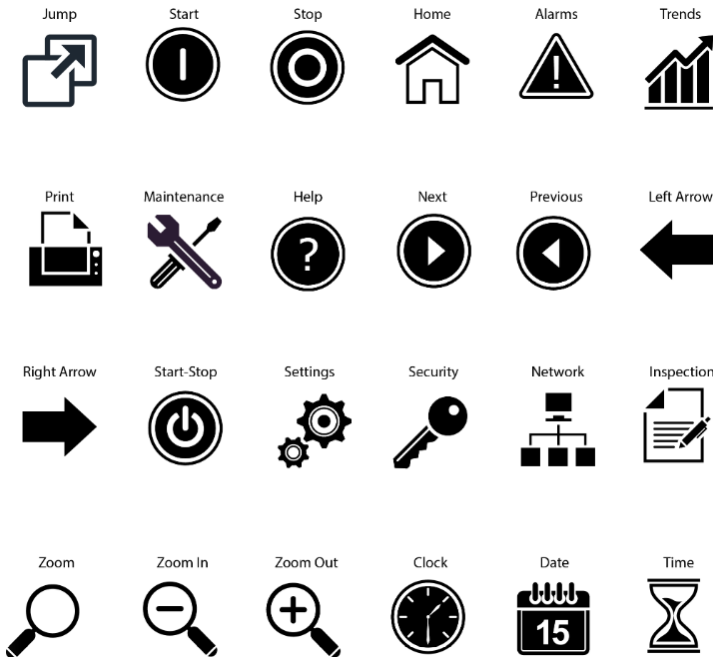
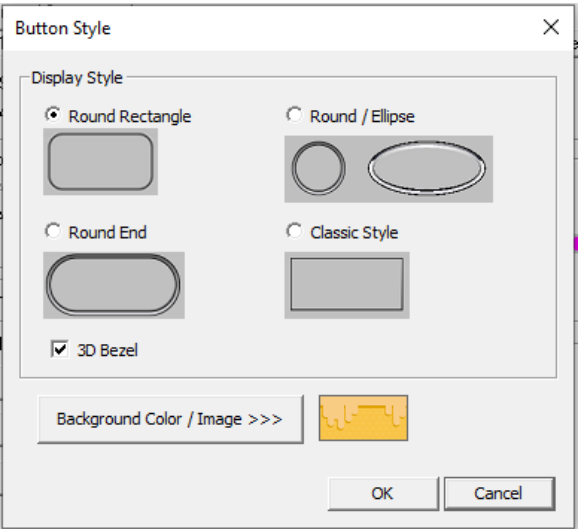


**Pushbuttons**

**Toggle Switches**

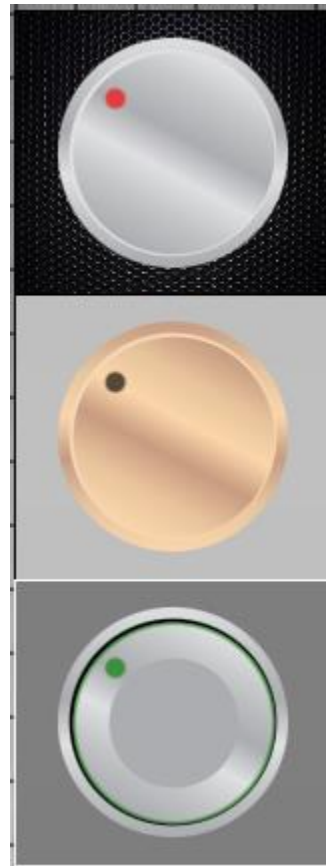
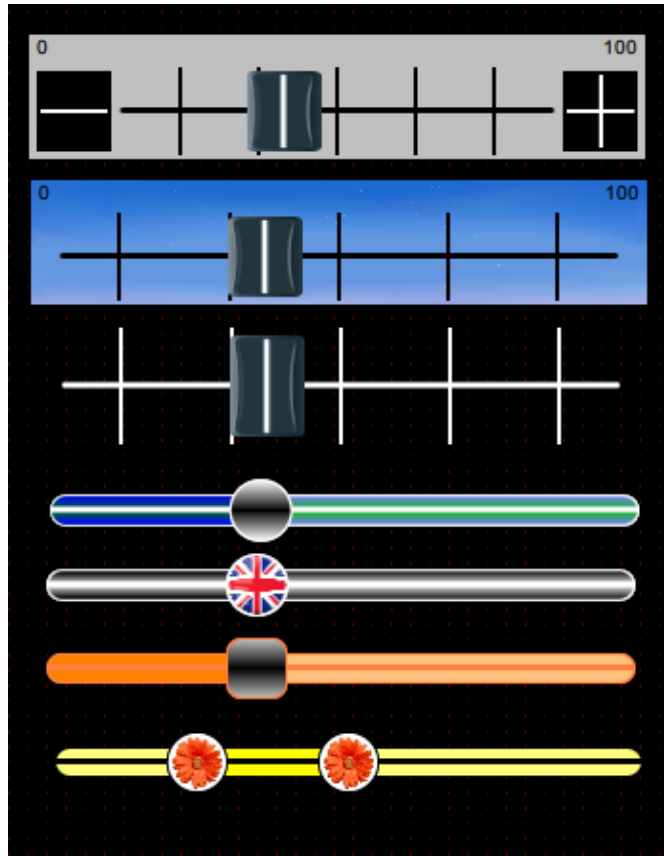
**Multi-Position Switches**

# Jump Button Enhancements



Screen Change via a  
Swipe Gesture  
(optional)

## Slider Enhancements



**New Rotary  
Style Option**

**Slider Properties**

Data Source

Source Device: Local Device

Address: %R00235 Data Size: 16-Bit

Name:

Scale

☐ Show Scale Limits

Font: Arial 8

Ticks: 0

Type: **Rotary**

Knob: MetalGray

Maximum: 100

Minimum: 0

Display Properties

Attributes >>> Background >>> Legend Plate ☒

Legend >>> Legend/Line Color >>> Fill Indicator ☒

Access >>> Slider Color >>> Knob Color >>>

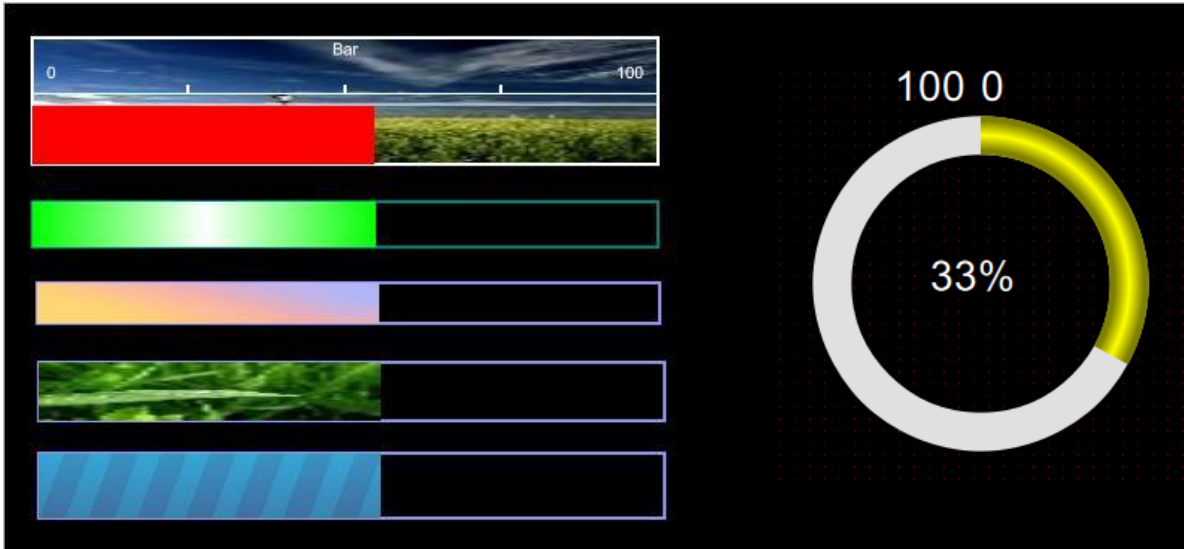
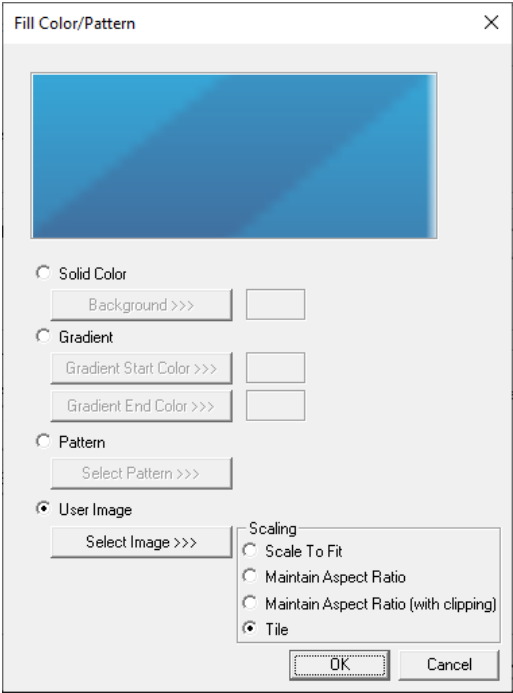
☒ Show Slider

☐ Show Inc / Dec Buttons

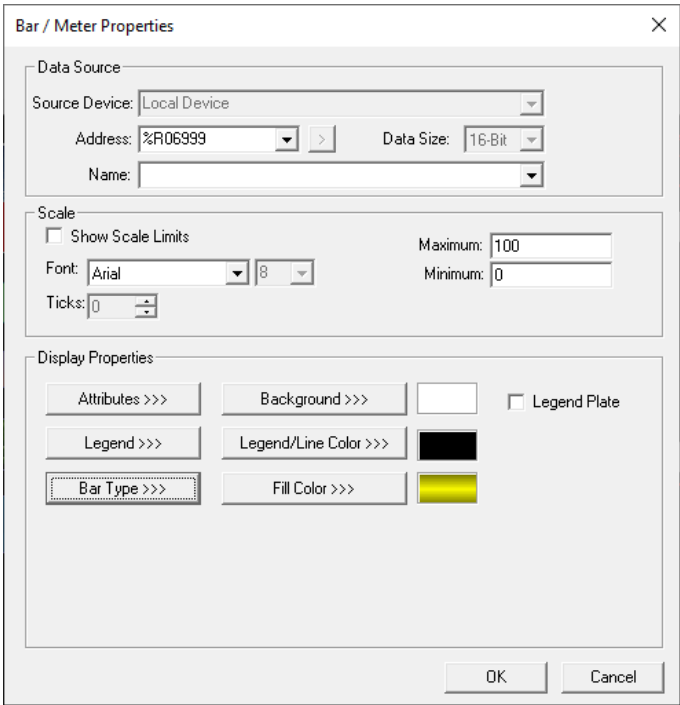
OK Cancel



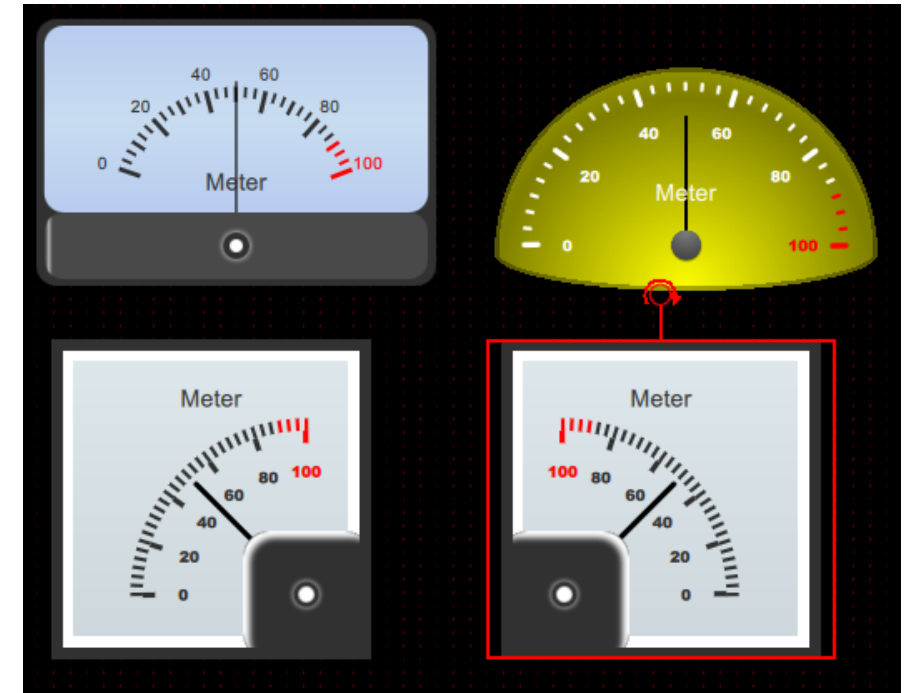
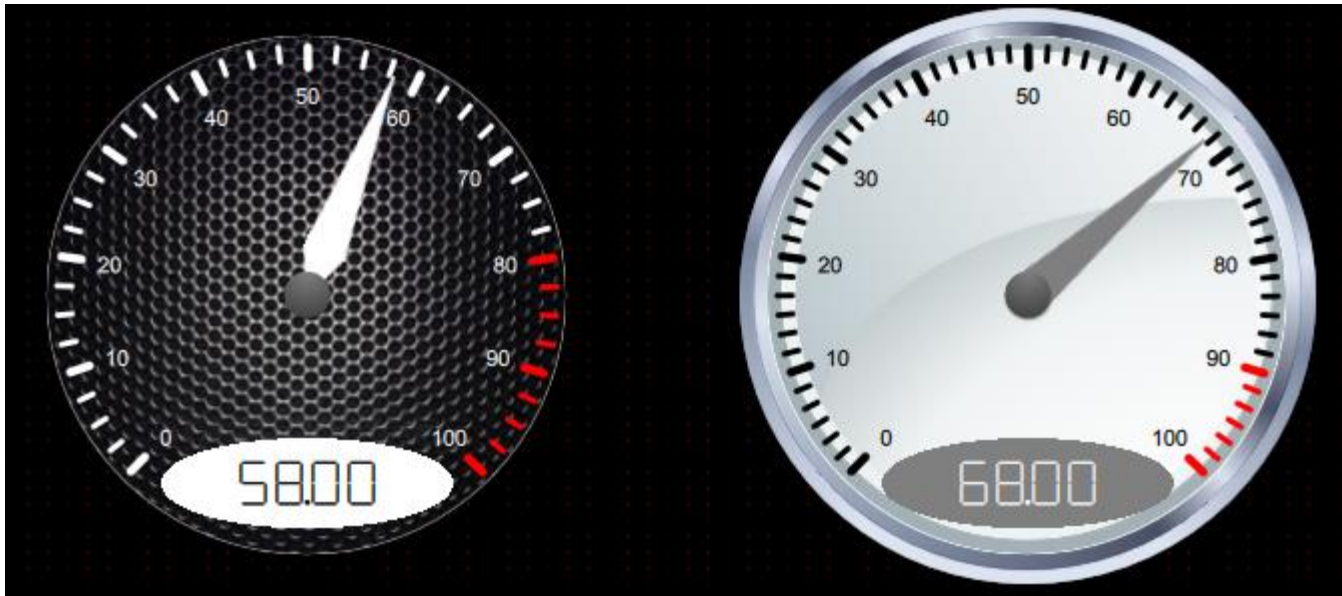
# Bar Graphs & Progress Bar Enhancements



Linear or Rotary Style

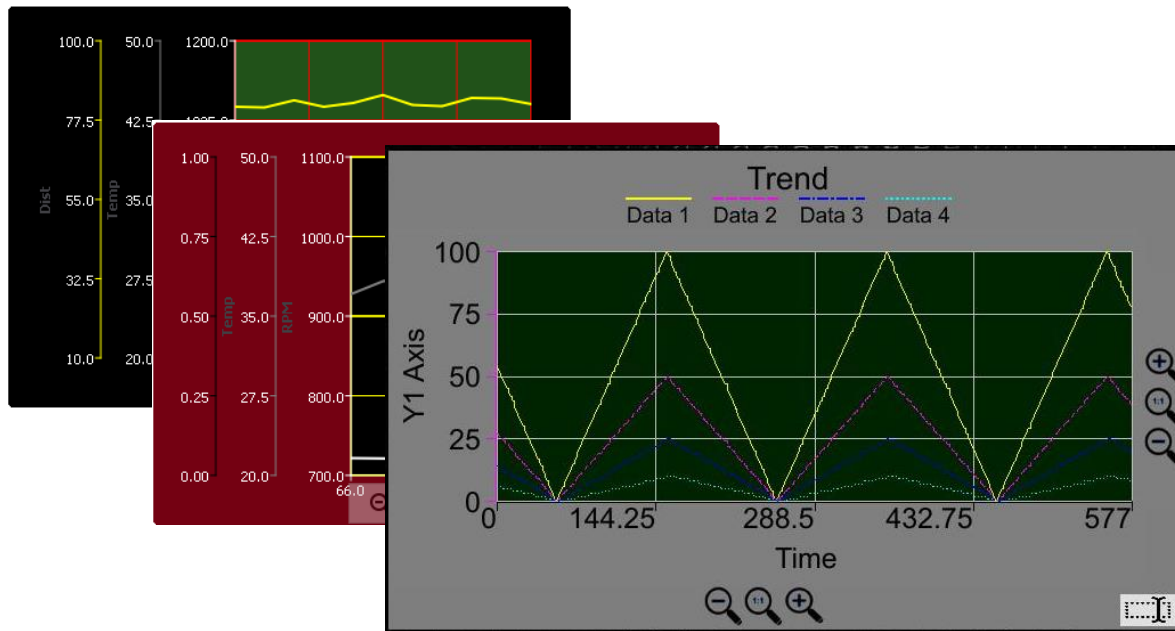


## Gauge & Meter Object Enhancements



**New Styles & Support for all Variable Types (INT, DINT, REAL)**

## Redesigned Trend & Graph Objects



**Trend Properties**

**Trend Type**

☐ Snap Shot Scope ☒ Standard Trend  
☐ Continuous Scope ☐ Retentive Trend

**Trigger**

Source Device: Local Device  
 Address: %R05800.1 Data Size: 1-Bit  
 Name:

**Display Options**

☒ Display Horizontal Grid ☒ Display Vertical Grid ☐ Enable Data Value Cursor  
 Sample Rate: 1 Name: Seconds

**Pens**

#	Data Source	IO Name	Axis	Minimum	Maximum	Legend	Color	Line Style	Data Type
1	%R03801		Y1	0	100	Data 1	Yellow	Solid	Decimal
2	%R03802		Y1	0	100	Data 2	Magenta	Dash	Decimal
3	%R03803		Y2	0	200	Data 3	Cyan	Dash Dot	Decimal
4	%R03804		Y2	0	200	Data 4	Cyan	Solid	Decimal

**Axis**

Axis	Minimum	Maximum	Legend	Font	Ticks	Color	Show Range	Range	Color	Font	Ticks	Color	Show Range	Range
X	0	636	Time	Arial 15	5	Black	Y							
Y1	0	100	Y1 Axis	Arial 15	5	Magenta	Y							
Y2	0	200	Y2 Axis	Arial 15	5	Blue	Y							

**Display Properties**

Attributes >>> Background >>> Plot Color >>> Title >>> Legend/Line Color >>> Grid Color >>> Access >>>

**Historic Support**

☐ Enable  
 History Filename  
☐ Enable Replay  
☒ Enable Cursor

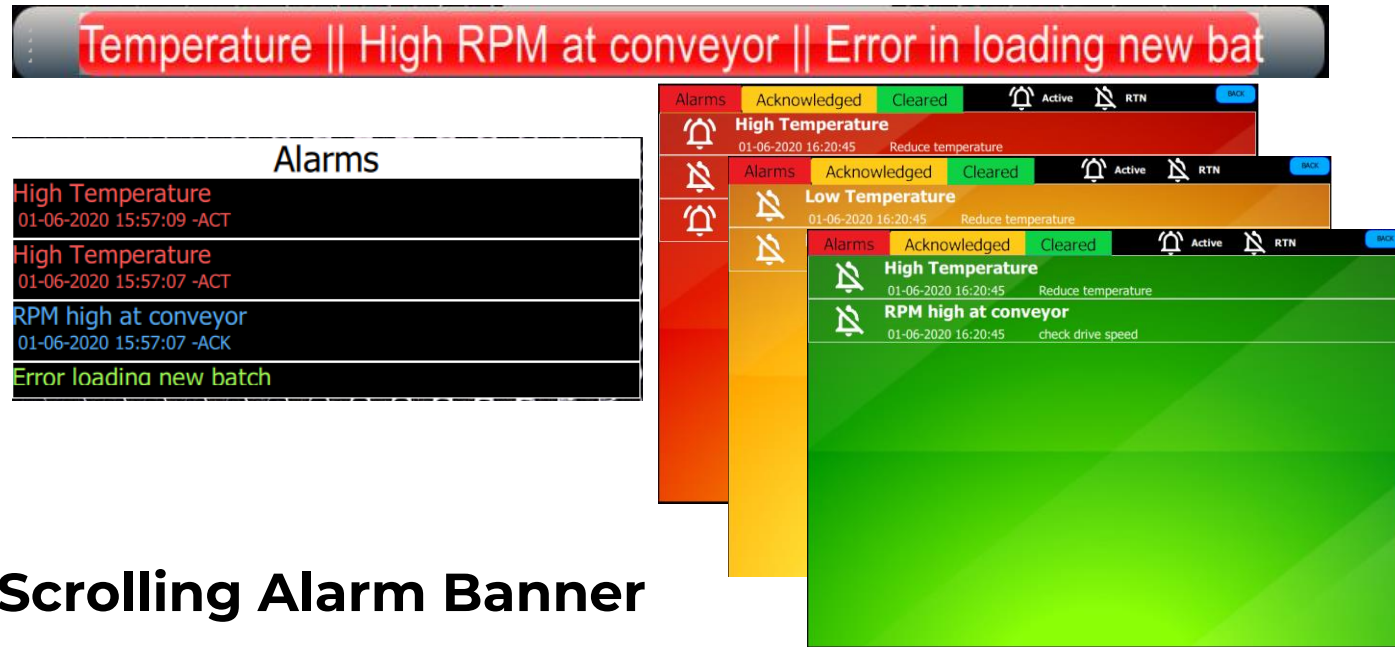
OK Cancel

**Support any Data Type (INT, DINT, REAL)**

**Dynamically Show/Hide Pens at Run-time**

**True XY Graph & Scatter Graph options**

# Redesigned Alarm Object

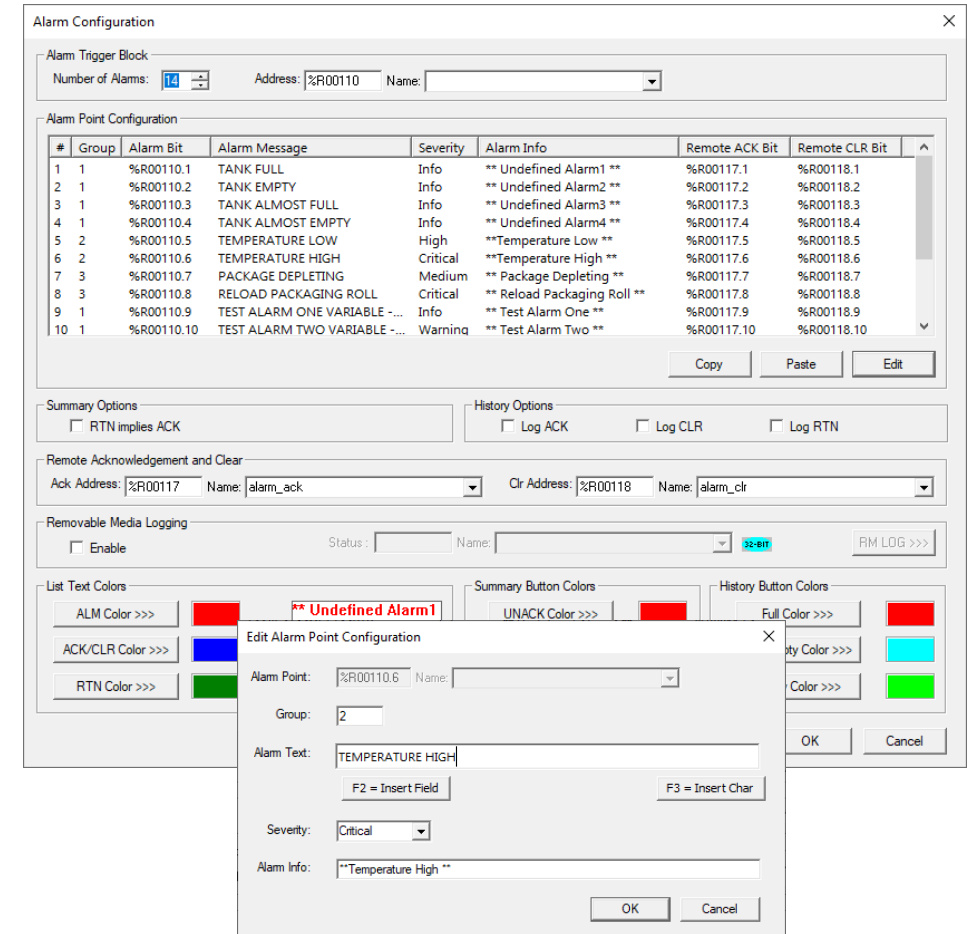


Scrolling Alarm Banner

Redesigned Alarm Status Screen

Dynamic Alarm Message Text

Gesture Support at Run-time (Scroll Up/Down)

















# Redesigned Recipe Object

Recipe Database Editor

File Edit View Help

	Wheat Flour	Water	Sugar	Fruit n nut	Raisin n Muesli	Kneading time	Baking Temp	Packaging Size
								
 Fruit n nut Bread	0	0	0	0	0	0	0	0
 French Bread	0	0	0	0	0	0	0	0
 Brown Bread	0	0	0	0	0	0	0	0
 Raisin n Muesli Bread	0	0	0	0	0	0	0	0

Product & Ingredient Images

Spinner for Ingredient Quantity

 Fruit n Nut Bread

 Raisin Muesli Bread

 French Bread

 Brown Bread

Fruit n Nut Bread

Wheat flourSugarWaterFruit & NutsKneading timeBaking temperaturePackaging Size



50 Kg20 Kg2 L2 Kg50 Min200 °C150 mm

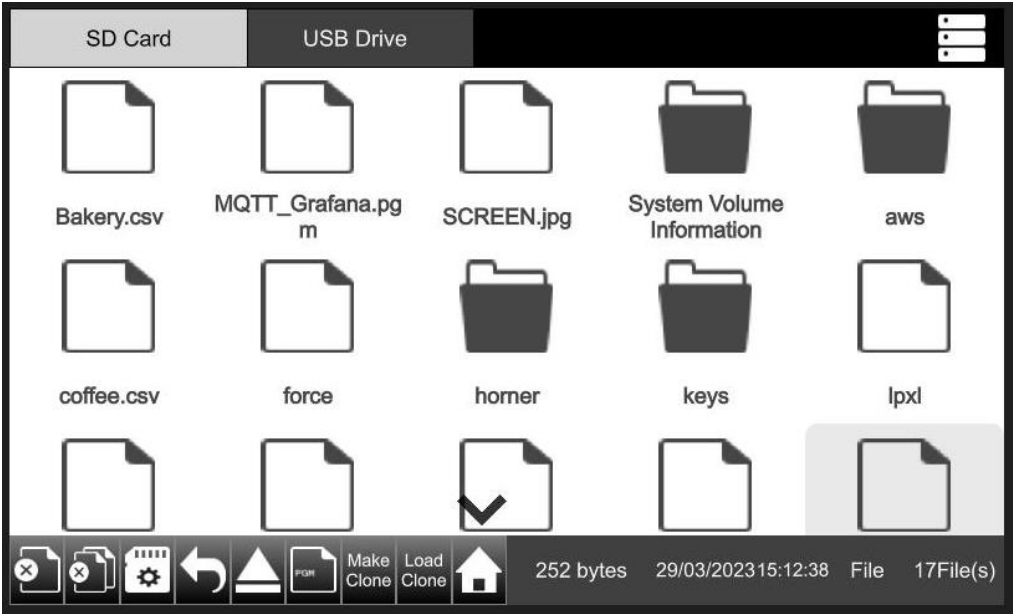


Scroll Up/Down for Product Selection

Integrated Operator Buttons (Add, Delete, Load, Save, Help, etc.)



# Redesigned Removable Memory Object



Multiple Views

File & Folder Sorting



Tabs for both MicroSD & USB

Built-in Buttons (Copy, Delete, etc.)

## Redesigned Video Object

**Support for Higher Resolutions**

**Built-in Control buttons including Play, Stop, Pause**

**Full-Screen Control**



**Integrate Help Videos with subtitles and your Machine Control**

# Who Should Use Cscape 10?

- Canvas Users must use Cscape 10
- Other Users can upgrade to Cscape 10 on their schedule
- Both Cscape 9.9 & 10 will be posted as current versions on our web site during the transition
- Both versions can be installed simultaneously on the same PC

