

OCS-I/O - HE959ADC270

8 Analog Inputs: 0-20mA, 4-20mA, and 0-10V

1 TECHNICAL SPECIFICATIONS

1.1 General Specifications

Required Power (Steady State)	<130mA @ 5V; <26mA @ 24V
Analog Inputs	8
Port Wiring	16-24 AWG/0.2-1.4mm ²
Operating Air Temperature	-40°C (-40°F) to 60°C (140°F)
Storage Temperature	-40°C (-40°F) to 85°C (185°F)
Weight	3.10 OZ.
Relative Humidity	5-95% non-condensing
Dimensions	76.5mm x 124.5mm x 19mm; 3" x 4.9" x 0.75"
Certifications (UL/CE)	North America: https://hornerautomation.com/certifications/ Europe: https://www.hornerautomation.eu/support/certifications-2



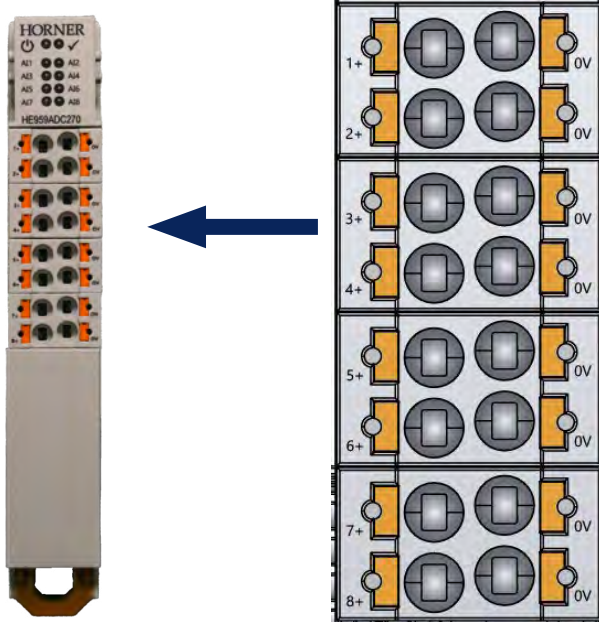
1.2 Analog Inputs

Number of Channels	8
Input Ranges	0-20mA, 4-20mA, 0-10V
Safe Input Voltage Range	+/- 30 VDC
Nominal Resolution	16 Bit
%AI Full Scale	0-32,000
Input Impedance	Current Input Impedance 100Ω Voltage Input Impedance 110kΩ
Galvanic Isolation	None
Maximum Input Voltage	30 VDC

Cscape Configuration:

- See MAN1175 for the HE959CNX116.
- See MAN1400 for HE959CNX100.

2 WIRING



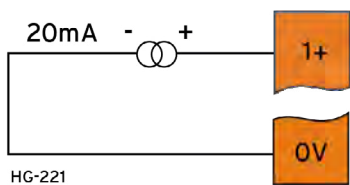
Use 75°C copper conductors only.

SIGNAL	Label	SIGNAL	LABEL
1+	Input 1+	0V	Common
2+	Input 2+	0V	Common
3+	Input 3+	0V	Common
4+	Input 4+	0V	Common
5+	Input 5+	0V	Common
6+	Input 6+	0V	Common
7+	Input 7+	0V	Common
8+	Input 8+	0V	Common

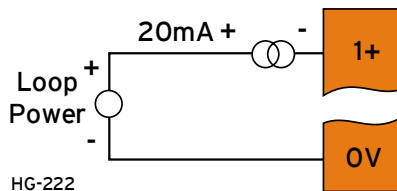
Commons are internally connected, and using a separate common for each input can improve signal integrity.

Analog Inputs

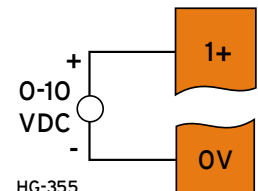
20mA Analog In - Self Powered



20mA Analog In - Not Self Powered



0-10VDC IN



2 DIAGNOSTIC LED INDICATORS

Status	OK LED
OFF	Power Up
ON	IO Module Running Normally
BLINK (1Hz)	One of the following errors: a. Communication between IO Base and IO Module (IO ERROR) b. No Configuration c. OCS idle mode
LED Status for Individual I/O Channels	
AIX	Analog Input X Active*

NOTE: LED will be in OFF state if the channel is disabled from Cscape configuration.

***NOTE:**

- LED will be ON during Normal operations.
- Analog Input channel configured as Volts or mA LED will be OFF until the input signal is 0+0.2% of full scale.

3 SAFETY

3.1 - WARNINGS



WARNING - If the equipment is used in a manner not specified by Horner APG, the protection provided by the equipment may be impaired.

WARNING - EXPLOSION HAZARD - Do not disconnect equipment unless power has been removed or the area is known to be non-hazardous

AVERTISSEMENT - RISQUE D'EXPLOSION -Ne débranchez pas l'équipement tant que l'alimentation n'a pas été coupée ou que la zone n'est pas dangereuse.

WARNING - EXPLOSION HAZARD - Substitution of any component may impair suitability for Class I, Division 2

AVERTISSEMENT - RISQUE D'EXPLOSION -Le remplacement de tout composant peut nuire à la compatibilité avec la classe I, division 2

WARNING - POSSIBLE EQUIPMENT DAMAGE - Remove power from the I/O Base and any peripheral equipment connected to this local system before adding or replacing this or any module.

AVERTISSEMENT - DOMMAGES POSSIBLES À L'ÉQUIPEMENT - Coupez l'alimentation de la base d'E / S et de tout équipement périphérique connecté à ce système local avant d'ajouter ou de remplacer ce module ou tout autre module.

3.2 - SAFETY

- All applicable codes and standards should be followed in the installation of this product.
- Shielded, twisted-pair wiring should be used for best performance.
- Shields should be grounded at one end only, preferably at the end providing the best noise shunting.
- Use the following wire type or equivalent: Belden 8441.

4 PART NUMBER

HE959ADC270

5 TECHNICAL SUPPORT

For assistance and manual updates, contact Technical Support at the following locations:

North America

(317) 916-4274
www.hornerautomation.com
techsppt@heapg.com

Europe

(+) 353-21-4321-266
www.hornerautomation.com
technical.support@horner-appg.com